

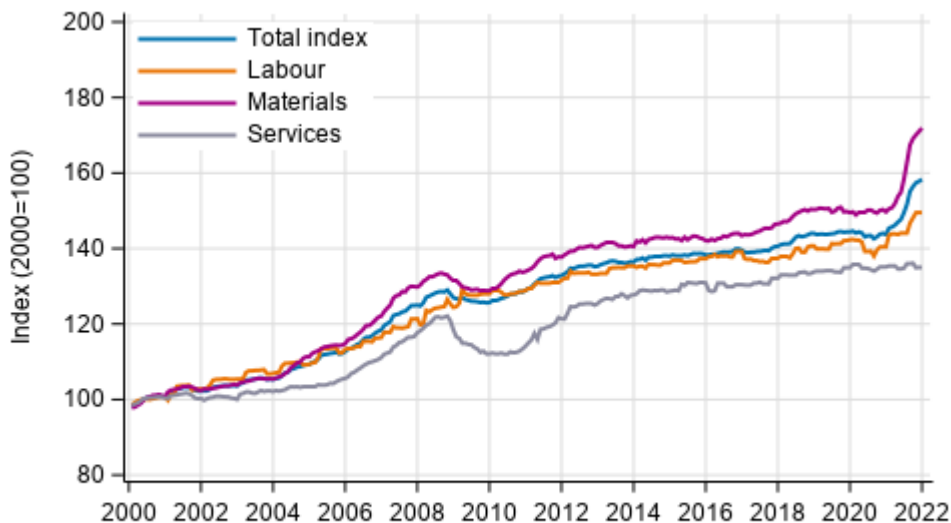
Building cost index

2021, December

Building costs rose by 10,2 per cent in December year-on-year

According to Statistics Finland, building costs rose by 10.2 per cent in December 2021 from one year back. The costs of materials went up by 14.8 per cent and labour costs by 6.5 per cent year-on-year. The prices of services were on level with the previous year.

Long term development of the Building Cost Index



Source: Statistics Finland

From November to December, the total index of building costs rose by 0.3 per cent. The prices of materials went up by 0.5 per cent. The prices of labour inputs and services remained unchanged from the previous month in December.

The price of timber has continued declining since the turn in October 2021, and from November to December it fell by 4.4 per cent. Despite this, the price of timber was still 50.7 per cent higher at the end of 2021 than one year earlier.

Building Cost Index's new base year 2021=100

The next base year for the Building Cost Index will be 2021=100, to be published on 15 February 2022. Further information in the [news release](#).

Building cost index 2015=100, December 2021

Professional construction of new buildings		Weights	Index	Monthly change, %	Annual change, %
Total index		1000	114.4	0.3	10.2
By type of cost	Labour inputs	400	109.4	0.0	6.5
	Materials	510	120.3	0.5	14.8
	Services	90	103.3	0.0	-0.0
By purpose of use	Residential building	440	114.5	0.1	10.2
	Other building construction	560	114.4	0.4	10.2

Contents

Tables

Appendix tables

Appendix table 1. Input indices 2015=100, December 2021.....	4
Appendix table 2. Residential building 2015=100, December 2021.....	5

Figures

Appendix figures

Appendix figure 1. Input indices 2015=100, largest annual changes, per cent.....	6
Appendix figure 2. Index clause sub-indices P 2000=100.....	6

Appendix tables

Appendix table 1. Input indices 2015=100, December 2021

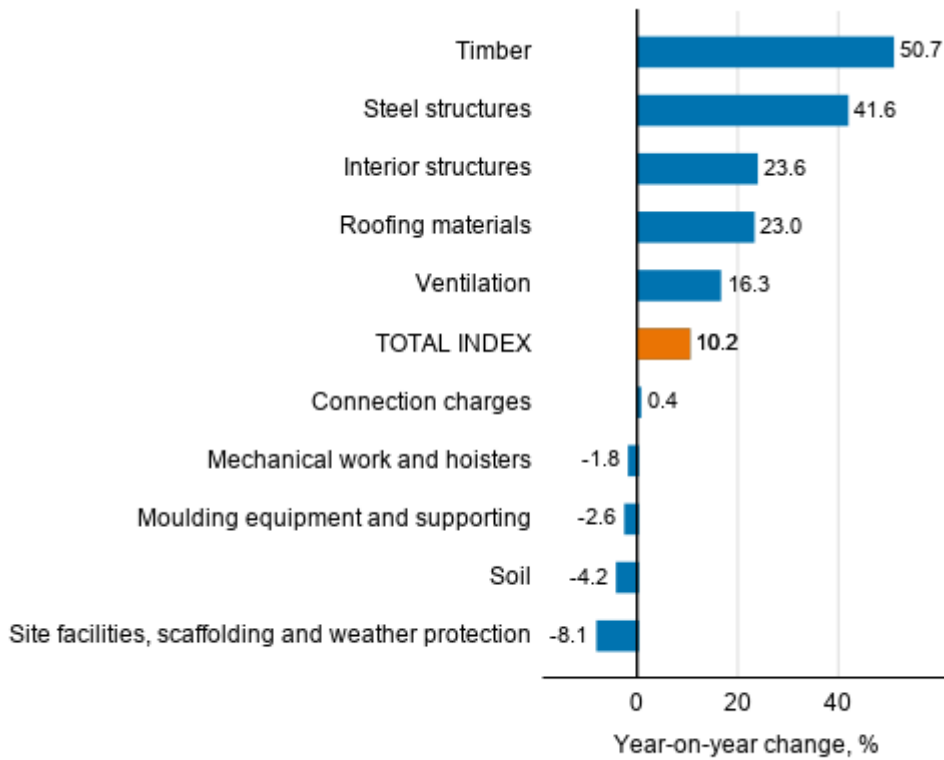
Input heading	Weights	Index	Monthly change, %	Annual change, %
0 TOTAL INDEX	1000.0	114.4	0.3	10.2
01 LABOUR	399.8	109.4	0.0	6.5
02 MATERIALS	510.0	120.3	0.5	14.8
02.1 AREA	41.9	97.8	-1.5	-2.8
02.1.1 Soil	28.9	103.4	-2.0	-4.2
02.1.2 Construction site surface structures	13.0	85.4	-0.2	1.3
02.2 HOUSE	242.1	126.2	1.0	22.1
02.2.1 Concrete, bricks and blocks	37.8	115.5	3.1	13.0
02.2.2 Precast concrete units	54.4	117.4	2.5	11.6
02.2.3 Steel structures	17.3	154.1	4.5	41.6
02.2.4 Timber	36.0	163.2	-4.4	50.7
02.2.5 Heat insulation	22.4	107.7	1.9	12.7
02.2.6 Windows and doors	59.8	115.8	1.3	16.2
02.2.7 Roofing materials	14.4	133.1	1.7	23.0
02.3 FACILITIES	93.3	116.7	0.4	8.5
02.3.1 Interior structures	15.9	128.0	1.4	23.6
02.3.2 Surface materials	41.2	114.2	0.2	6.1
02.3.3 Fixtures, taps and household appliances	36.2	114.6	0.1	4.8
02.4 TECHNICAL SYSTEMS	132.7	119.3	0.3	11.7
02.4.1 Heat, water and sewer	21.4	114.6	0.1	4.8
02.4.2 Ventilation	28.0	121.9	0.6	16.3
02.4.3 Electricity, control, lighting and lift	83.3	119.1	0.4	10.1
03 SERVICES	90.2	103.3	0.0	-0.0
03.1 SITE AND FIXTURE SERVICES	76.7	102.5	0.0	-0.2
03.1.1 Transport	27.1	112.1	0.0	5.0
03.1.2 Mechanical work and hoisters	9.0	88.8	0.0	-1.8
03.1.3 Site facilities, scaffolding and weather protection	21.0	89.2	0.0	-8.1
03.1.4 Moulding equipment and supporting	1.5	88.6	0.0	-2.6
03.1.5 Waste charges	10.8	118.4	0.0	0.7
03.1.6 Site energy	7.2	101.7	0.0	1.8
03.2 OTHER SERVICES	13.5	107.4	0.0	0.9
03.2.1 Insurance	4.5	113.4	0.1	1.9
03.2.2 Connection charges	9.0	104.5	0.0	0.4

Appendix table 2. Residential building 2015=100, December 2021

	Weights	Index	Monthly change, %	Annual change, %
0 Total index of residential building	1000	117.8	-0.1	11.1
01 New building of residential buildings	400	115.0	0.1	9.8
01.1 Detached house	150	115.9	-0.1	11.0
01.2 Block of flats	250	114.5	0.3	9.1
02 Renovation building of residential buildings	600	119.6	-0.2	11.9
02.1 Dwelling repairs of residential buildings	240	116.1	0.1	7.0
02.2 Building repairs of residential buildings	360	122.0	-0.3	15.3
02.2.1 Building repairs of detached houses	180	127.3	-0.8	19.3
02.2.2 Building repairs of blocks of flats	180	116.6	0.2	11.2

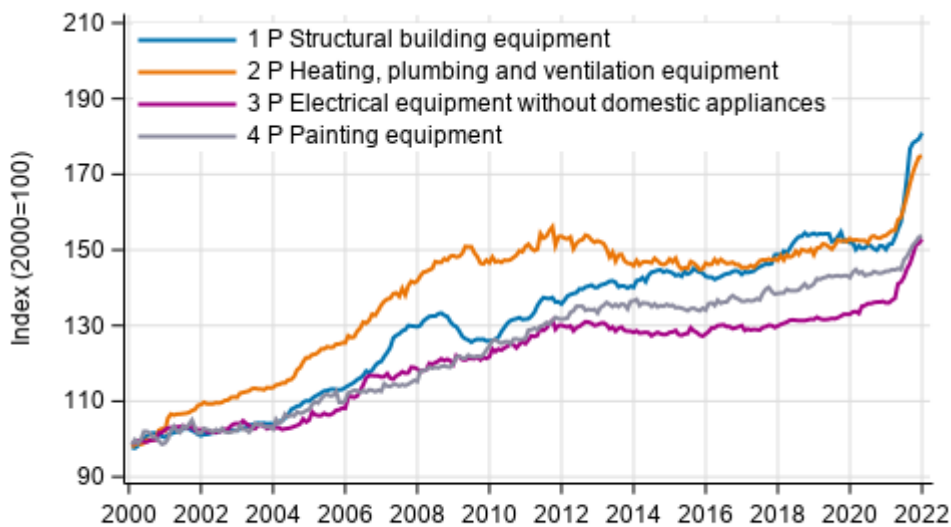
Appendix figures

Appendix figure 1. Input indices 2015=100, largest annual changes, per cent



Source: Statistics Finland

Appendix figure 2. Index clause sub-indices P 2000=100



Source: Statistics Finland

Inquiries

Liina Arhosalo 029 551 3612

Merja Järvinen 029 551 2458

Head of Department in
charge:

Hannele Orjala

info@stat.fi

www.stat.fi

Source: Building cost index, Statistics Finland