

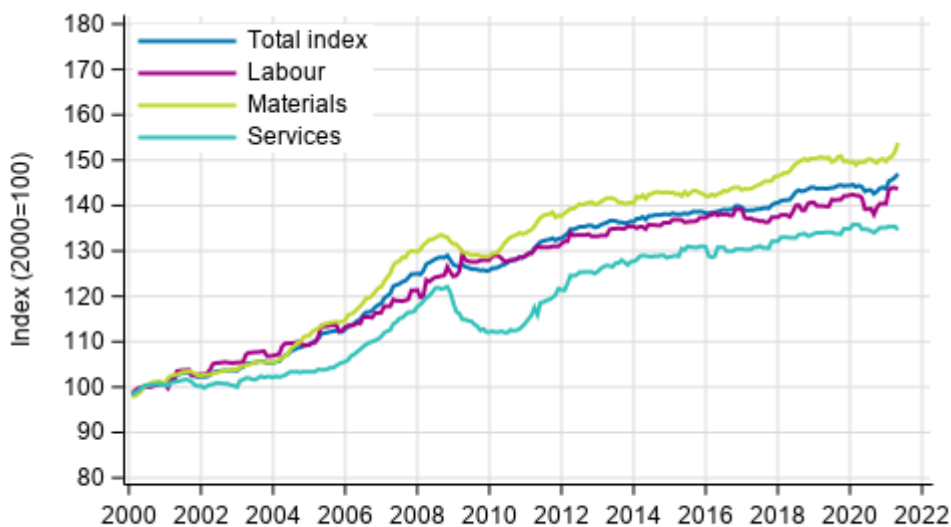
Building cost index

2021, April

Building costs rose by 2.0 per cent in April year-on-year

According to Statistics Finland, building costs rose by 2.0 per cent in April 2021 year-on-year. The costs of materials went up by 2.8 per cent and labour costs by 1.4 per cent. The prices of services fell by 0.1 per cent from one year ago. Among materials especially the prices of timber and steel structures went up.

Long term development of the Building Cost Index



Source: Statistics Finland

From March to April, the total index of building costs rose by 0.5 per cent. The prices of materials rose by 1.2 per cent. The prices of labour costs went down by 0.2 per cent and those of services by 0.6 per cent from the month before.

Building cost index 2015=100, April 2021

| Professional construction of new buildings | | Weights | Index | Monthly change, % | Annual change, % |
|--|-----------------------------|---------|-------|-------------------|------------------|
| Total index | | 1000 | 106.2 | 0.5 | 2.0 |
| By type of cost | Labour inputs | 400 | 105.2 | -0.2 | 1.4 |
| | Materials | 510 | 107.7 | 1.2 | 2.8 |
| | Services | 90 | 102.9 | -0.6 | -0.1 |
| By purpose of use | Residential building | 440 | 106.4 | 0.7 | 2.2 |
| | Other building construction | 560 | 106.1 | 0.4 | 1.8 |

Contents

Tables

Appendix tables

| | |
|--|---|
| Appendix table 1. Input indices 2015=100, April 2021..... | 4 |
| Appendix table 2. Residential building 2015=100, April 2021..... | 5 |

Figures

Appendix figures

| | |
|--|---|
| Appendix figure 1. Input indices 2015=100, largest annual changes, per cent..... | 6 |
| Appendix figure 2. Index clause sub-indices P 2000=100..... | 6 |

Appendix tables

Appendix table 1. Input indices 2015=100, April 2021

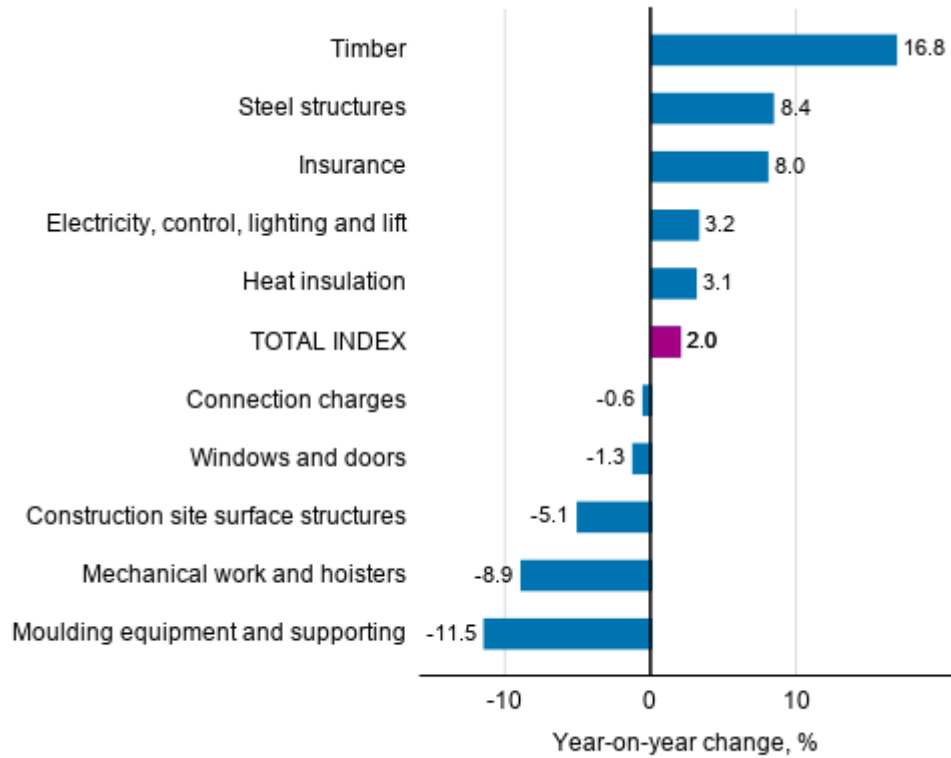
| Input heading | Weights | Index | Monthly change, % | Annual change, % |
|--|---------|-------|-------------------|------------------|
| 0 TOTAL INDEX | 1000.0 | 106.2 | 0.5 | 2.0 |
| 01 LABOUR | 399.8 | 105.2 | -0.2 | 1.4 |
| 02 MATERIALS | 510.0 | 107.7 | 1.2 | 2.8 |
| 02.1 AREA | 41.9 | 98.9 | -1.8 | -1.6 |
| 02.1.1 Soil | 28.9 | 105.4 | -2.5 | -0.3 |
| 02.1.2 Construction site surface structures | 13.0 | 84.6 | 0.2 | -5.1 |
| 02.2 HOUSE | 242.1 | 107.4 | 1.5 | 3.9 |
| 02.2.1 Concrete, bricks and blocks | 37.8 | 105.0 | 0.6 | 2.6 |
| 02.2.2 Precast concrete units | 54.4 | 105.3 | 0.4 | 1.0 |
| 02.2.3 Steel structures | 17.3 | 117.3 | 4.4 | 8.4 |
| 02.2.4 Timber | 36.0 | 123.8 | 7.4 | 16.8 |
| 02.2.5 Heat insulation | 22.4 | 97.5 | 6.2 | 3.1 |
| 02.2.6 Windows and doors | 59.8 | 101.1 | -3.6 | -1.3 |
| 02.2.7 Roofing materials | 14.4 | 109.6 | 2.5 | 1.5 |
| 02.3 FACILITIES | 93.3 | 109.2 | 0.7 | 1.2 |
| 02.3.1 Interior structures | 15.9 | 106.6 | 2.4 | 2.4 |
| 02.3.2 Surface materials | 41.2 | 108.1 | 0.3 | 0.6 |
| 02.3.3 Fixtures, taps and household appliances | 36.2 | 111.6 | 0.5 | 1.4 |
| 02.4 TECHNICAL SYSTEMS | 132.7 | 109.9 | 2.0 | 3.3 |
| 02.4.1 Heat, water and sewer | 21.4 | 111.6 | 0.5 | 1.4 |
| 02.4.2 Ventilation | 28.0 | 107.0 | 2.2 | 2.5 |
| 02.4.3 Electricity, control, lighting and lift | 83.3 | 111.4 | 2.1 | 3.2 |
| 03 SERVICES | 90.2 | 102.9 | -0.6 | -0.1 |
| 03.1 SITE AND FIXTURE SERVICES | 76.7 | 102.3 | -0.7 | -0.6 |
| 03.1.1 Transport | 27.1 | 109.1 | 2.7 | 1.2 |
| 03.1.2 Mechanical work and hoisters | 9.0 | 87.0 | -3.6 | -8.9 |
| 03.1.3 Site facilities, scaffolding and weather protection | 21.0 | 92.7 | -4.7 | -0.3 |
| 03.1.4 Moulding equipment and supporting | 1.5 | 86.0 | -2.7 | -11.5 |
| 03.1.5 Waste charges | 10.8 | 118.4 | 0.0 | 0.7 |
| 03.1.6 Site energy | 7.2 | 103.4 | -0.6 | 1.6 |
| 03.2 OTHER SERVICES | 13.5 | 106.2 | 0.0 | 2.3 |
| 03.2.1 Insurance | 4.5 | 111.7 | 0.1 | 8.0 |
| 03.2.2 Connection charges | 9.0 | 103.5 | 0.0 | -0.6 |

Appendix table 2. Residential building 2015=100, April 2021

| | Weights | Index | Monthly change, % | Annual change, % |
|---|---------|-------|-------------------|------------------|
| 0 Total index of residential building | 1000 | 109.1 | 0.8 | 3.5 |
| 01 New building of residential buildings | 400 | 107.3 | 0.7 | 3.1 |
| 01.1 Detached house | 150 | 107.6 | 1.0 | 3.6 |
| 01.2 Block of flats | 250 | 107.2 | 0.5 | 2.8 |
| 02 Renovation building of residential buildings | 600 | 110.2 | 0.9 | 3.7 |
| 02.1 Dwelling repairs of residential buildings | 240 | 110.4 | 0.6 | 2.5 |
| 02.2 Building repairs of residential buildings | 360 | 110.1 | 1.1 | 4.6 |
| 02.2.1 Building repairs of detached houses | 180 | 112.3 | 2.0 | 5.9 |
| 02.2.2 Building repairs of blocks of flats | 180 | 107.9 | 0.2 | 3.3 |

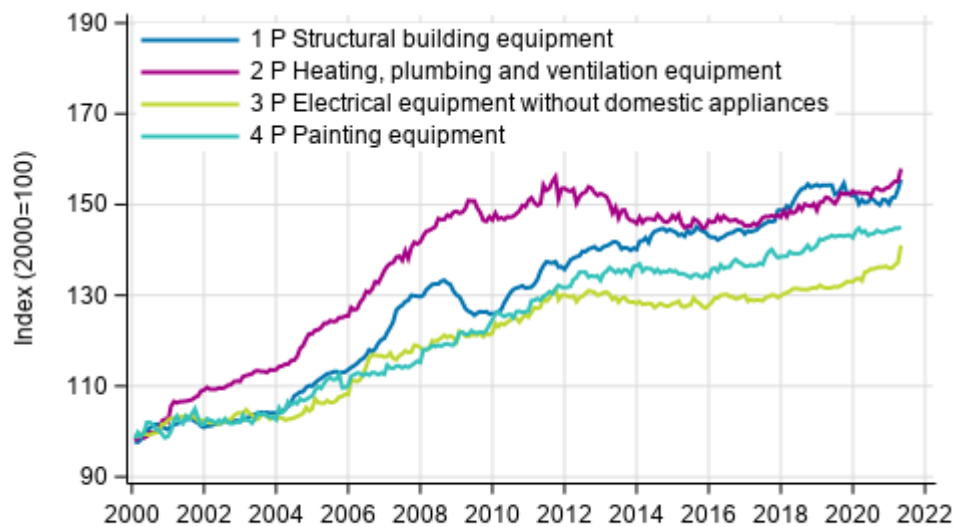
Appendix figures

Appendix figure 1. Input indices 2015=100, largest annual changes, per cent



Source: Statistics Finland

Appendix figure 2. Index clause sub-indices P 2000=100



Source: Statistics Finland

Inquiries

Liina Arhosalo 029 551 3612

Merja Järvinen 029 551 2458

Head of Department in
charge:

Hannele Orjala

info@stat.fi

www.stat.fi

Source: Building cost index, Statistics Finland