

Building cost index

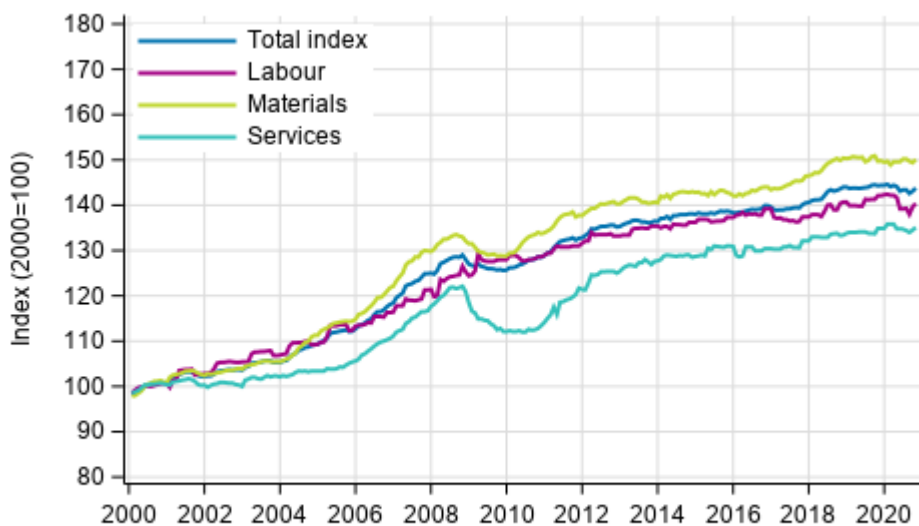
2020, October

Corrected release 10/2020: Building costs fell by 0.3 per cent in October year-on-year

Data of the building cost index has been corrected from May 2020 to October 2020. Further information in this [newsletter](#).

According to Statistics Finland, building costs fell by 0.3 per cent in October 2020 from one year back. Labour costs fell by 1.2 per cent. Prices of materials rose by 0.3 per cent and those of services by 0.1 per cent compared to one year earlier.

Long term development of the Building Cost Index



Source: Statistics Finland

From September to October, the total index of building costs rose by 0.5 per cent. Labour costs, prices of materials and services rose by 0.5 per cent from the previous month.

Building cost index 2015=100, October 2020

| Professional construction of new buildings | | Weights | Index | Monthly change, % | Annual change, % |
|--|-----------------------------|---------|-------|-------------------|------------------|
| Total index | | 1000 | 104.0 | 0.5 | -0.3 |
| By type of cost | Labour inputs | 400 | 102.7 | 0.5 | -1.2 |
| | Materials | 510 | 105.1 | 0.5 | 0.3 |
| | Services | 90 | 103.3 | 0.5 | 0.1 |
| By purpose of use | Residential building | 440 | 104.0 | 0.5 | -0.5 |
| | Other building construction | 560 | 103.9 | 0.5 | -0.2 |

Contents

Tables

Appendix tables

| | |
|--|---|
| Appendix table 1. Input indices 2015=100, October 2020..... | 4 |
| Appendix table 2. Residential building 2015=100, October 2020..... | 5 |

Figures

Appendix figures

| | |
|--|---|
| Appendix figure 1. Input indices 2015=100, largest annual changes, per cent..... | 6 |
| Appendix figure 2. Index clause sub-indices P 2000=100..... | 6 |

Appendix tables

Appendix table 1. Input indices 2015=100, October 2020

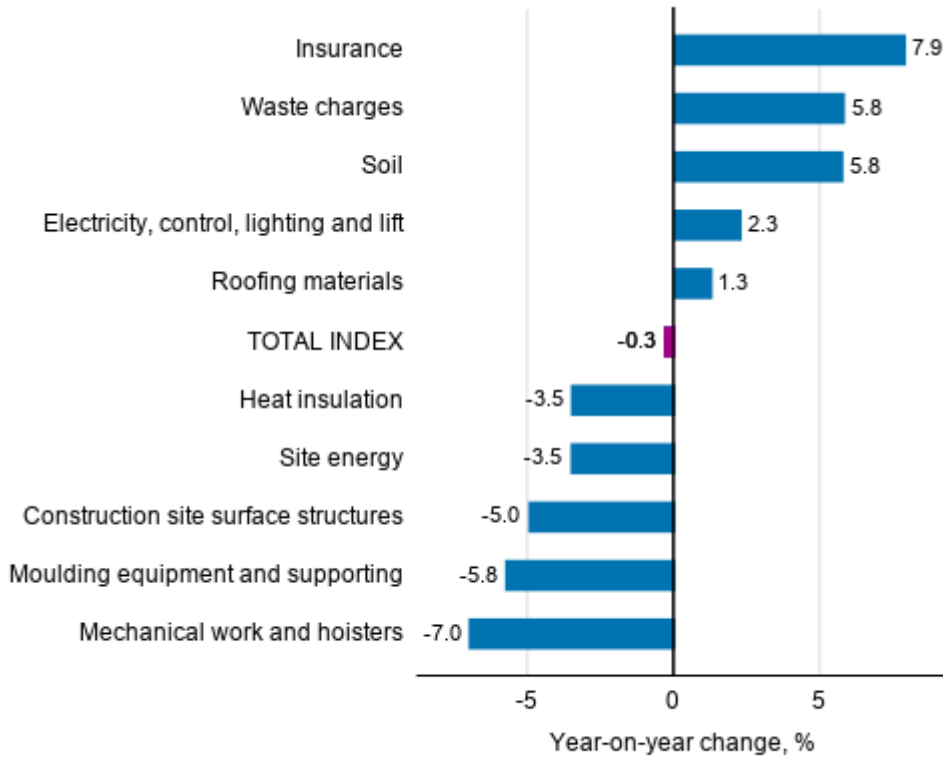
| Input heading | Weights | Index | Monthly change, % | Annual change, % |
|--|---------|-------|-------------------|------------------|
| 0 TOTAL INDEX | 1000.0 | 104.0 | 0.5 | -0.3 |
| 01 LABOUR | 399.8 | 102.7 | 0.5 | -1.2 |
| 02 MATERIALS | 510.0 | 105.1 | 0.5 | 0.3 |
| 02.1 AREA | 41.9 | 100.5 | 0.6 | 2.7 |
| 02.1.1 Soil | 28.9 | 107.6 | 0.7 | 5.8 |
| 02.1.2 Construction site surface structures | 13.0 | 84.8 | 0.3 | -5.0 |
| 02.2 HOUSE | 242.1 | 104.2 | 1.0 | -0.7 |
| 02.2.1 Concrete, bricks and blocks | 37.8 | 102.2 | 0.2 | -0.1 |
| 02.2.2 Precast concrete units | 54.4 | 106.6 | 1.1 | -2.0 |
| 02.2.3 Steel structures | 17.3 | 108.5 | -0.7 | -0.7 |
| 02.2.4 Timber | 36.0 | 108.1 | 0.7 | 0.8 |
| 02.2.5 Heat insulation | 22.4 | 95.5 | 3.0 | -3.5 |
| 02.2.6 Windows and doors | 59.8 | 102.0 | 1.9 | -0.3 |
| 02.2.7 Roofing materials | 14.4 | 107.8 | -0.5 | 1.3 |
| 02.3 FACILITIES | 93.3 | 107.3 | -0.3 | -0.1 |
| 02.3.1 Interior structures | 15.9 | 103.6 | 0.0 | -0.6 |
| 02.3.2 Surface materials | 41.2 | 107.2 | 0.0 | 0.4 |
| 02.3.3 Fixtures, taps and household appliances | 36.2 | 109.0 | -0.7 | -0.3 |
| 02.4 TECHNICAL SYSTEMS | 132.7 | 106.6 | 0.0 | 1.5 |
| 02.4.1 Heat, water and sewer | 21.4 | 109.0 | -0.7 | -0.3 |
| 02.4.2 Ventilation | 28.0 | 104.7 | 0.0 | 0.1 |
| 02.4.3 Electricity, control, lighting and lift | 83.3 | 108.2 | 0.0 | 2.3 |
| 03 SERVICES | 90.2 | 103.3 | 0.5 | 0.1 |
| 03.1 SITE AND FIXTURE SERVICES | 76.7 | 102.7 | 0.5 | -0.3 |
| 03.1.1 Transport | 27.1 | 106.8 | -1.0 | -0.2 |
| 03.1.2 Mechanical work and hoisters | 9.0 | 90.5 | 0.8 | -7.0 |
| 03.1.3 Site facilities, scaffolding and weather protection | 21.0 | 97.0 | 4.1 | 0.4 |
| 03.1.4 Moulding equipment and supporting | 1.5 | 90.9 | -2.2 | -5.8 |
| 03.1.5 Waste charges | 10.8 | 117.6 | 0.0 | 5.8 |
| 03.1.6 Site energy | 7.2 | 99.9 | -1.8 | -3.5 |
| 03.2 OTHER SERVICES | 13.5 | 106.5 | 0.0 | 2.6 |
| 03.2.1 Insurance | 4.5 | 111.4 | 0.1 | 7.9 |
| 03.2.2 Connection charges | 9.0 | 104.0 | 0.0 | -0.0 |

Appendix table 2. Residential building 2015=100, October 2020

| | Weights | Index | Monthly change, % | Annual change, % |
|---|---------|-------|-------------------|------------------|
| 0 Total index of residential building | 1000 | 106.1 | 0.5 | 0.6 |
| 01 New building of residential buildings | 400 | 104.9 | 0.5 | 0.4 |
| 01.1 Detached house | 150 | 104.5 | 0.5 | 0.4 |
| 01.2 Block of flats | 250 | 105.1 | 0.5 | 0.3 |
| 02 Renovation building of residential buildings | 600 | 106.9 | 0.4 | 0.8 |
| 02.1 Dwelling repairs of residential buildings | 240 | 108.0 | 0.0 | 0.8 |
| 02.2 Building repairs of residential buildings | 360 | 106.2 | 0.7 | 0.8 |
| 02.2.1 Building repairs of detached houses | 180 | 107.1 | 0.7 | 0.8 |
| 02.2.2 Building repairs of blocks of flats | 180 | 105.3 | 0.7 | 0.9 |

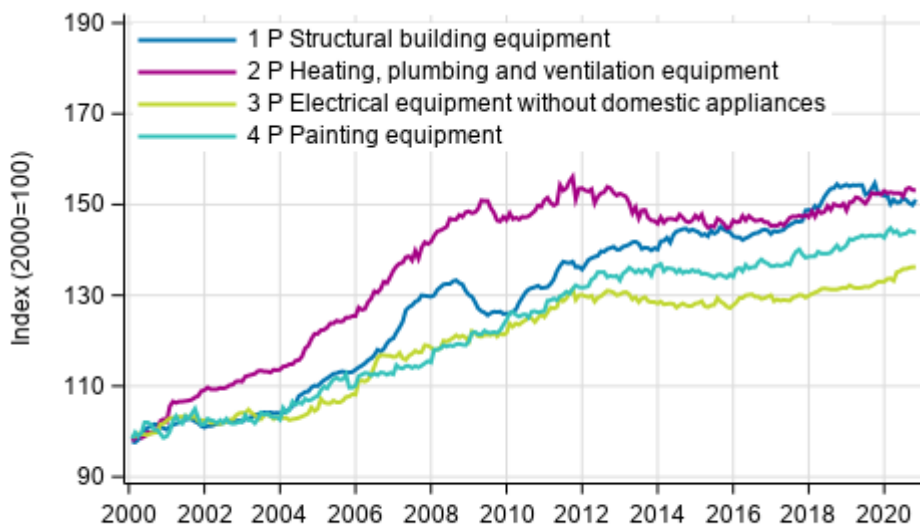
Appendix figures

Appendix figure 1. Input indices 2015=100, largest annual changes, per cent



Source: Statistics Finland

Appendix figure 2. Index clause sub-indices P 2000=100



Source: Statistics Finland

Inquiries

Liina Arhosalo 029 551 3612
Merja Järvinen 029 551 2458
Head of Department in
charge:
Hannele Orjala

info@stat.fi
www.stat.fi
Source: Building cost index, Statistics Finland