

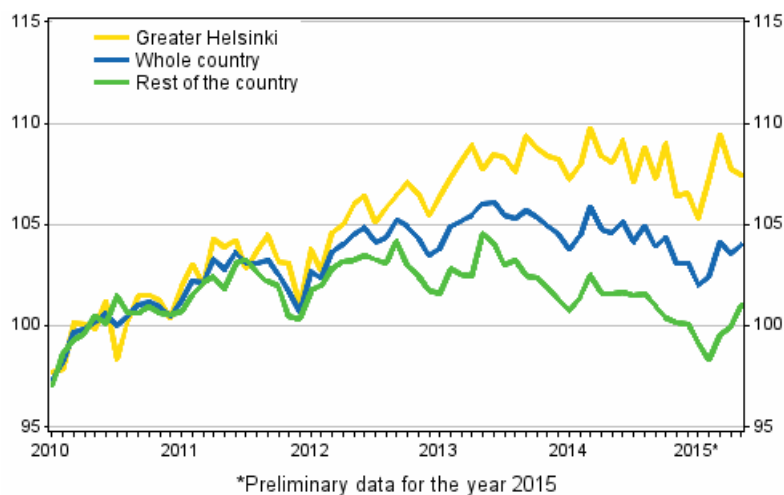
Prices of dwellings in housing companies

2015, May

Prices of dwellings in housing companies rose slightly in May

According to Statistics Finland's preliminary data, prices of dwellings in old blocks of flats and terraced houses went up by 0.4 per cent in the whole country from April to May. In Greater Helsinki, prices went down by 0.3 per cent, while in the rest of Finland they went up by 1.1 per cent. Compared with the corresponding period of the previous year, prices fell by 0.6 per cent in the whole country. Prices went down by 0.6 per cent in Greater Helsinki and by 0.5 per cent in the rest of Finland year-on-year.

Development of prices of old dwellings in housing companies by month, index 2010=100



In May 2015, the average price per square metre of an old dwelling in a housing company was EUR 2,243 in the whole country, EUR 3,479 in Greater Helsinki and EUR 1,689 elsewhere in the country.

When the monthly statistics on prices of dwellings in housing companies are published, they cover approximately 40 per cent of all transactions made in the latest statistical month. The monthly data become revised during the following months so that the final data for the year are published in the release concerning the first quarter of the following year. Further information about data revisions can be found in separate tables.

Contents

Tables

Appendix tables

Appendix table 1. Unencumbered average prices per square metre of old dwellings in housing companies, May 2015.....	3
Appendix table 2. Unencumbered average prices per square metre of blocks of flats, May 2015.....	3
Appendix table 3. Unencumbered average prices per square metre of terraced houses, May 2015.....	4
Appendix table 4. Unencumbered average prices per square metre of old dwellings in housing companies, April 2015.....	4
Appendix table 5. Unencumbered average prices per square metre of old dwellings in housing companies, March 2015.....	5
Revisions in these statistics.....	6
Quality Description: Prices of dwellings in housing companies.....	7

Appendix tables

Appendix table 1. Unencumbered average prices per square metre of old dwellings in housing companies, May 2015¹⁾

Area	Price, euro/m ²	Index (2010=100)	Monthly change, %	Yearly change, %	Number
Whole country	2 243	104,0	0,4	-0,6	2 830
Greater Helsinki	3 479	107,5	-0,3	-0,6	932
Rest of the country (whole country - Greater Helsinki)	1 689	101,0	1,1	-0,5	1 898
Satellite municipalities ²⁾	2 153	99,9	-1,3	-2,8	197
Southern Finland	2 614	104,9	0,1	-1,2	1 792
Western Finland	1 734	103,3	1,0	1,5	496
Eastern Finland	1 591	100,1	-0,3	-0,2	305
Northern Finland	1 573	99,4	4,7	1,2	237
Helsinki	3 913	111,0	0,9	0,3	594
Espoo-Kauniainen	3 136	102,2	-3,0	-2,7	183
Vantaa	2 631	101,8	-0,2	-0,9	155
Tampere	2 234	105,4	0,5	-2,2	66
Turku	2 052	108,0	3,1	-0,2	113
Oulu	1 772	96,2	2,6	-1,6	88

1) Preliminary data

2) Satellite municipalities = Hyvinkää, Järvenpää, Kerava, Kirkkonummi, Nurmijärvi, Riihimäki, Sipoo, Tuusula and Vihti

Appendix table 2. Unencumbered average prices per square metre of blocks of flats, May 2015¹⁾

Area	Price, euro/m ²	Index (2010=100)	Monthly change, %	Yearly change, %
Whole country	2 393	106,4	1,2	0,0
Greater Helsinki	3 682	110,7	1,2	0,1
Rest of the country (whole country - Greater Helsinki)	1 674	101,5	1,2	-0,1
Satellite municipalities ²⁾	2 013	100,9	-4,0	-3,5
Southern Finland	2 774	108,1	1,7	-0,4
Western Finland	1 727	101,3	-3,1	-0,1
Eastern Finland	1 619	101,6	2,1	1,9
Northern Finland	1 703	101,1	7,6	5,3
Helsinki	4 115	113,1	2,0	0,8
Espoo-Kauniainen	3 107	106,3	-1,7	-2,4
Vantaa	2 475	101,6	0,0	-1,1
Tampere	2 220	105,2	-2,5	-2,8
Turku	2 016	109,1	3,9	-1,4
Oulu	1 932	96,3	-0,1	1,1

1) Preliminary data

2) Satellite municipalities = Hyvinkää, Järvenpää, Kerava, Kirkkonummi, Nurmijärvi, Riihimäki, Sipoo, Tuusula and Vihti

Appendix table 3. Unencumbered average prices per square metre of terraced houses, May 2015¹⁾

Area	Price, euro/m ²	Index (2010=100)	Monthly change, %	Yearly change, %
Whole country	2 054	100,9	-0,6	-1,3
Greater Helsinki	3 112	101,4	-3,0	-1,9
Rest of the Country (whole country - Greater Helsinki)	1 705	100,6	0,9	-1,0
Satellite municipalities ²⁾	2 252	99,3	0,4	-2,4
Southern Finland	2 382	100,2	-2,4	-2,4
Western Finland	1 742	105,5	5,5	3,2
Eastern Finland	1 563	98,5	-2,9	-2,2
Northern Finland	1 469	98,1	2,4	-2,0
Helsinki	3 239	103,4	-3,5	-1,4
Espoo-Kauniainen	3 159	99,5	-3,9	-2,9
Vantaa	2 822	102,4	-0,4	-0,8
Tampere ³⁾
Turku	2 153	105,4	1,4	2,5
Oulu	1 621	96,1	5,2	-4,1

1) Preliminary data

2) Satellite municipalities = Hyvinkää, Järvenpää, Kerava, Kirkkonummi, Nurmijärvi, Riihimäki, Sipoo, Tuusula and Vihti

3) .= less than 20 transactions

Appendix table 4. Unencumbered average prices per square metre of old dwellings in housing companies, April 2015¹⁾

Area	Price, euro/m ²	Index (2010=100)	Monthly change, %	Yearly change, %	Number
Whole Country	2 243	103,6	-0,6	-1,1	4 647
Greater Helsinki	3 506	107,7	-1,6	-0,6	1 372
Rest of the country (whole country - Greater Helsinki)	1 678	99,9	0,4	-1,6	3 275
Satellite municipalities ²⁾	2 182	101,1	2,8	-1,2	310
Southern Finland	2 638	104,8	-0,8	-1,1	2 829
Western Finland	1 747	102,3	-1,1	-0,2	998
Eastern Finland	1 495	100,4	3,1	-0,8	422
Northern Finland	1 477	95,0	0,3	-5,3	398
Helsinki	3 876	110,0	-2,1	-0,4	804
Espoo-Kauniainen	3 265	105,4	-0,7	-0,6	336
Vantaa	2 704	102,1	-0,6	-1,4	232
Tampere	2 251	104,8	-2,9	-0,6	234
Turku	2 002	104,7	-1,6	-3,5	258
Oulu	1 637	93,8	-0,5	-5,8	184

1) Updated preliminary data

2) Satellite municipalities = Hyvinkää, Järvenpää, Kerava, Kirkkonummi, Nurmijärvi, Riihimäki, Sipoo, Tuusula and Vihti

Appendix table 5. Unencumbered average prices per square metre of old dwellings in housing companies, March 2015¹⁾

Area	Price, euro/m ²	Index (2010=100)	Monthly change, %	Yearly change, %	Number
Whole Country	2 267	104,1	1,6	-1,7	5 349
Greater Helsinki	3 574	109,4	2,1	-0,3	1 524
Rest of the country (whole country - Greater Helsinki)	1 681	99,6	1,2	-2,9	3 825
Satellite municipalities ²⁾	2 145	98,3	-2,4	-7,1	363
Southern Finland	2 661	105,7	1,7	-1,6	3 110
Western Finland	1 785	103,4	1,9	0,0	1 335
Eastern Finland	1 437	97,4	3,4	-4,7	433
Northern Finland	1 565	94,7	-2,0	-3,6	471
Helsinki	3 994	112,4	2,5	-0,3	930
Espoo-Kauniainen	3 290	106,2	2,0	-0,1	314
Vantaa	2 677	102,7	0,2	-0,4	280
Tampere	2 317	108,0	3,6	3,8	346
Turku	1 930	106,3	0,1	0,6	284
Oulu	1 759	94,2	-3,8	-3,6	238

1) Updated preliminary data

2) Satellite municipalities = Hyvinkää, Järvenpää, Kerava, Kirkkonummi, Nurmijärvi, Riihimäki, Sipoo, Tuusula and Vihti

Revisions in these statistics

The data of the statistics have become revised according to the tables below. For more information about data revisions, see section 3 of the quality description.

Revisions to data on monthly changes in prices of dwellings in housing companies, monthly statistics¹⁾

Area and reference time		Monthly change, %		Revision, percentage point
		Latest release 30.6.2015	1st release	
Whole country	01/2015	-1,1	-0,8	-0,3
	02/2015	0,4	0,1	0,3
	03/2015	1,6	1,7	-0,1
	04/2015	-0,6	0,2	-0,8
Greater Helsinki	01/2015	-1,2	-0,3	-0,9
	02/2015	1,9	0,4	1,5
	03/2015	2,1	3,8	-1,7
	04/2015	-1,6	-1,3	-0,3
Rest of the country	01/2015	-0,9	-1,2	0,3
	02/2015	-0,9	-0,2	-0,7
	03/2015	1,2	-0,3	1,5
	04/2015	0,4	1,5	-1,1

1) The 1st release refers to the time when data for the reference period were released for the first time. The revision describes the difference of monthly change percentages between the latest and first release.

Revisions to data on annual changes in prices of dwellings in housing companies, monthly statistics¹⁾

Area and reference time		Annual changes, %		Revision, percentage point
		Latest release 30.06.2015	1st release	
Whole country	01/2015	-1,7	-1,5	-0,2
	02/2015	-1,9	-1,6	-0,3
	03/2015	-1,7	-1,9	0,2
	04/2015	-1,1	-1,0	-0,1
Greater Helsinki	01/2015	-1,8	-1,5	-0,3
	02/2015	-0,7	-0,7	0,0
	03/2015	-0,3	1,2	-1,5
	04/2015	-0,6	-0,3	-0,3
Rest of the country	01/2015	-1,6	-1,5	-0,1
	02/2015	-3,0	-2,3	-0,7
	03/2015	-2,9	-4,7	1,8
	04/2015	-1,6	-1,6	0,0

1) The 1st release refers to the time when data for the reference period were released for the first time. The revision describes the difference of yearly change percentages between the latest and first release.

Quality Description: Prices of dwellings in housing companies

1. Relevance

1.1 Information content and purpose of use

The statistics on Prices of dwellings in housing companies describe the unencumbered prices per square metre of old dwellings in housing companies, and monthly, quarterly and annual changes in them. For new dwellings data will be published quarterly and annually. The statistics contain data classified by area and type of building for the examined month and for a longer time period. The purpose of the statistics is to provide information about price development on the housing market.

1.2. Concepts, classifications and data

The data and the data suppliers:

Old dwellings: The data of the statistics on dwelling prices are based on the price information gathered by the Finnish Tax Administration for asset transfer tax calculation purposes. Additionally, the Tax Administration's Register of Real Estate Property and Statistics Finland's data on the dwelling stock that are based on the Population Register Centre's Register of Buildings and Dwellings are also used for the statistics.

New dwellings: The data of the statistics on dwelling prices are based on the information Statistics Finland receives via a private price monitoring service about transactions in new dwellings made by the largest real estate agents and building contractors. The monthly statistics do not contain information on new dwellings due to the scarcity of statistical data.

Used concepts:

Dwelling: A dwelling refers to a room or suite of rooms that is equipped with a kitchen, kitchenette or cooking area and is intended for year-round habitation.

Price per square metre of dwelling: The statistics are compiled from data on unencumbered prices, in other words, prices inclusive of the debt portion. The published price concept is price per square metre (EUR/m²).

Floor area of dwelling: The floor area (m²) of a dwelling is calculated from the inner surfaces of the walls enclosing it. The floor areas of auxiliary spaces (utility space, walk-in wardrobe, etc.), bathroom, hobby room, fireplace room, sauna in dwelling, washroom and changing room, and rooms used as working space if no hired employees work in them are also included in the floor area of a dwelling. Garage, cellar, sauna space in unoccupied basement, unheated storage space, balcony, porch, veranda, vestibule and unoccupied attic space are not included in the floor area of a dwelling.

First home: First-time dwelling transactions include those that are entitled to the exemption from the asset transfer tax for first-time homebuyers (www.vero.fi/en-US).

Old/new dwelling: An old dwelling refers to a dwelling that has not been completed in the examined year or the year before it. Respectively, a new dwelling refers to a dwelling completed in the statistical reference year or the year before it that is sold for the first time.

Type of building: The dwellings in the statistics are classified into blocks of flats and terraced houses according to type of building. The data on terraced houses also include detached houses whose tenure is based on ownership of housing company shares.

Type of financing: Dwellings financed with ARA subsidised housing loans and price controlled HITAS dwellings are not included in the non-subsidised dwelling category used in the statistics.

Number of rooms: A room is defined as a space with one or more windows that has a floor area of at least seven square metres and mean height of at least two metres. A hall, porch, bed recess or other similar space is not regarded as a room. Kitchen is not included in the number of rooms. Dwellings with at least

three rooms are classified into room number category 3h+. In the monthly statistics data are not published by number of rooms due to the scarcity of statistical data.

(Nominal) price index: Describes the change in prices compared to the base period of the index concerned. The base period for the indices of old dwellings in housing companies are 1970, 1983, 2000, 2005 and 2010, and the base period for new dwellings are 2005 and 2010.

Real price index: Describes the change in real prices compared to the index base period. The real price index is derived by dividing the point figure of the nominal price index for the area with the point figure of the Consumer Price Index for the whole country in the corresponding time period and base year.

Distribution parameters:

Q1 (lower quartile) = 25% of the observations remain below.

Med (median) = Middle observation when the observations are arranged in size order.

Q3 (upper quartile) = 75% of the observations remain below.

Classifications:

Annual and quarterly statistics:

Regional division, old dwellings: The statistics use diverse area combinations, such as Greater Helsinki Area, satellite municipalities around the Greater Helsinki Area, regions and urban sub-areas. The Greater Helsinki Area comprises Helsinki, Espoo, Vantaa and Kauniainen, which in statistics is included in Espoo. The satellite municipalities are Hyvinkää, Järvenpää, Kerava, Kirkkonummi, Nurmijärvi, Riihimäki, Sipoo, Tuusula and Vihti. Regions are defined according to the decision of the Council of State. The urban sub-areas are formed of postal code areas using price level and location as the criteria. Details of the used regional classifications are appended to this publication and can be found on Statistics Finland's website.

Regional division, new dwellings: Due to the low number of transactions, the statistics on the prices of new dwellings are compiled according to a less detailed regional division than the statistics on the prices of old dwellings. The classification used in the statistics on the prices of new dwellings also takes into consideration the needs of the Consumer Price Index, hence the regional classification uses the division into major regions. The area categories are Whole country, Greater Helsinki, Rest of Finland (the same as with old dwellings, Whole country exclusive of Greater Helsinki), Rest of Uusimaa (exclusive of Greater Helsinki) and major regions Southern Finland, Western Finland, Eastern Finland, and Northern Finland.

Monthly statistics:

Regional division: The area categories are: Whole country, Greater Helsinki, Rest of Finland (Whole country exclusive of Greater Helsinki), Satellite municipalities (Hyvinkää, Järvenpää, Kerava, Kirkkonummi, Nurmijärvi, Riihimäki, Sipoo, Tuusula, Vihti), Helsinki, Espoo-Kauniainen, Vantaa, Tampere, Turku, Oulu and major regions Southern Finland, Western Finland, Eastern Finland, and Northern Finland.

2. Methodological description

The statistics on the prices of dwellings in housing companies describe the unencumbered prices per square metre of dwellings in housing companies and changes in them. The statistics include both unencumbered prices per square metre calculated as averages directly from the data and the price index for dwellings in housing companies that describes the change in prices.

The price index aims at answering the question how much more or less a typical dwelling in a housing company now costs compared with before on the basis of the total number of actual transaction prices. Because the composition of dwellings sold at different times is not the same, monitoring average price changes is not sufficient. For example, the relative shares of different types of dwellings among sold dwellings may vary from quarter to quarter. When calculating the index, the so-called hedonic method is used, where the aim is to separate the genuine price development from price changes caused by dwelling characteristics at different points in time with the help of data classification and regression analysis.

Classification: Because the location, type of building and number of rooms are the most important price determinants, the composition of sold dwellings is first standardised by classifying these variables. The

regional classification has been constructed so as to be geographically meaningful and as homogeneous as possible in respect of price levels of dwellings. In the regional classification, larger cities have been divided into several sub-areas and smaller municipalities, where only few transactions take place, have been combined. Within areas, dwellings in a housing company are divided by type of building into two categories: blocks of flats and terraced and detached houses. Dwellings in blocks of flats have been classified further by the number of rooms into one-room dwellings, two-room dwellings and dwellings with three or more rooms. Terraced houses have been divided by the number of rooms into two categories: dwellings with fewer than three rooms and dwellings with at least three rooms.

Regression model and quality adjustment: The used classification does not, however, homogenise the data sufficiently, because inside a class, dwellings differ from another in terms of micro-location, floor area, year of completion, and so on. The price data on old dwellings contain data on the year of completion, floor area, and location of the dwelling on the postal code level. The price data on new dwellings include data on the floor area and location of the dwelling on the postal code level. With the help of the regression model, these data are used to quality adjust for changes in the composition of the data between the base and reference periods.

An example of a quality adjustment: during the statistical quarter the dwellings in a certain area have, on average, a larger floor area than the dwellings in the base period. In the quality adjustment, the index is revised upwards as otherwise the lower price per square metre caused by the larger floor area would erroneously be interpreted as a drop in prices. If there is no difference in the floor areas of the dwellings sold during the statistical quarter compared to the base period, no quality adjustment is needed.

The index point figure for the whole country is derived by aggregating the index class-specific price changes and the quality adjustments with the so-called log-Laspeyres index formula. The weights for old dwellings are derived as value-shares of the stock of dwellings in housing companies in 2010. The weights of new dwellings are the consumption expenditure weights of the dwellings purchased in 2008 to 2012. The data of five years surrounding the base year are utilised in the calculation of the weights of new dwellings because the number and sizes of purchased new dwellings vary much by year and region.

A more detailed methodological description has been published in Statistics Finland's Studies series (Koev, Eugen: Combining classification and quality adjustment in constructing a House Price Index. Helsinki, Statistics Finland, Studies series (2013)).

3. Correctness and accuracy of the data

3.1. Reliability of the statistics

The statistics on the prices of old dwellings in housing companies are based on the Tax Administration's asset transfer tax data, which cover the transactions of all dwellings whose tenure is based on ownership of housing company shares. All transactions of old housing company dwellings are not included immediately in the statistics, because the purchaser is allowed two months to pay the asset transfer tax. Many purchasers pay the tax faster than this and in transactions intermediated by real estate agents the tax is paid at the time of transaction.

The statistics on the prices of new dwellings in housing companies are based on data obtained from the largest real estate agents and building contractors and the data are final when first published.

The statistics describe the housing company share market by area relatively reliably. However, the number of included transactions should be taken into consideration. If few transactions have been made, a couple of deviating cases may affect the average price for an area significantly. Therefore, the development of prices should always be examined in the longer term and not only for a certain time period.

3.2. Accuracy of the statistics

Cases with missing information about transaction prices or floor area, or with exceptionally high or low price due to contract within family or error in data entry are not accepted into the statistics. The acceptable ranges of prices per square metre by area are defined yearly for old and new dwellings.

[The price data become revised](http://tilastokeskus.fi/til/ashi/rev_en.html) (http://tilastokeskus.fi/til/ashi/rev_en.html) over the year so that the final data for the year are published in the release concerning the first quarter of the following year. On the average, the revision in monthly statistics on prices of dwellings in housing companies amounts to 0.3 percentage point either way for the whole country. The revision is larger for smaller geographical areas. The average revision in quarterly statistics amounts to 0.2 percentage point either way for the whole country.

3.3. Use of the parameters of the statistics

Because the price index takes into account changes in the distribution of year of completion, floor area and location of dwellings sold at different points in time, and their effects on prices, the average prices of the statistics vary differently from the price index. The price index and the average price are each useful measures for different situations.

The *price index* endeavours to measure as accurately as possible how much more/less an average dwelling in a housing company costs now than it did before. The *average price*, in turn, describes the prevailing price level for sold dwellings without considering whether they are older, newer, larger or smaller than dwellings sold before.

4. Timeliness and promptness of published data

4.1. Publication frequency and measurement period of the statistics

The statistics on prices of dwellings in housing companies are published monthly, quarterly and annually. Monthly data are released one month from the end of the statistical reference month and quarterly data are released simultaneously with the data for the last month of each quarter. Quarterly data are statistically more reliable than monthly data and contain more detailed information by area. The annual statistics are published in connection with the statistical release for the first quarter of the year following it.

4.2. Preliminariness of the statistics

When the statistics are published they cover approximately two-thirds of all transactions made in the latest quarter. The latest monthly statistics contain around two-fifths of all transactions. Statistics Finland receives the data on the remainder as they arrive at the Tax Administration.

Monthly and quarterly data are updated retrospectively in connection with each release so that the final data for the statistical year are published with the data for the first quarter of the year following it.

5. Accessibility and transparency of the data

A latest statistical release will be published from the statistics on Statistics Finland's web pages on the publication date of the statistics on prices of dwellings. Data concerning dwelling prices can also be found on Statistics Finland's web pages and database service. The essential metadata have been described in this document, which is incorporated into the publication of statistics on dwelling prices in housing companies. This document is also available on Statistics Finland's web pages.

These statistics cover only dwelling transactions in housing company shares. Especially out of the Greater Helsinki area, there are numerous real estate transactions that are not included in these statistics. Statistics Finland publishes a separate price index on real estate prices. Data on real estate transaction prices by municipality are available from the National Board of Survey.

6. Comparability of the statistics

6.1. Comparability with other data

When these statistics are compared with data from other producers the source of the basic data should be considered. Statistics Finland's data derive from the Tax Administration's comprehensive files, and thus cover exhaustively all completed transactions.

6.2. Comparability over time

Data compiled from the Tax Administration's asset transfer tax data are available on prices of old dwellings in housing companies quarterly starting from the year 1987. Older data are available going back to 1970. Data provided by real estate agents are available for the period 1970 to 1986 and the used classification is much less detailed. As regards new dwellings, the time series based on data provided by real estate agents have been calculated quarterly from 2005 onwards.

In January 2013, combinations of register data were updated. This increases the number of transactions by around three to five per cent on the annual level compared with earlier years.

From the beginning of 2015, the quality adjustment models and the weights used in the index calculation of both old and new dwellings in housing companies were updated. In terms of the calculation of old dwellings in housing companies, the procedure for checking prices was also updated. The monthly indices of old dwellings in housing companies, as well as the quarterly and annual indices of old and new dwellings in housing companies, have been backcasted from the year 2010 taking these changes into account. Due to the changes, the backcasted indices can to some extent differ from previously published indices. Most differences are generated in regions where the number of observations is low. For the whole country, the differences are small.

7. Coherence and consistency

In addition to the statistics on prices of dwellings in housing companies, Statistics Finland releases quarterly statistics on real estate prices. Besides the data published by Statistics Finland, real estate agents, credit institutions and banks also publish information concerning dwelling prices and their development.

Inquiries

Ilkka Lehtinen 029 551 3478

Outi Hautamäki 029 551 3472

Director in charge:

Mari Ylä-Jarkko

asuminen.hinnat@stat.fi

www.stat.fi

Source: Prices of dwellings in housing companies, Statistics Finland